



laboratory systems integration

Integrated Products and Services

Combining pharmaceutical domain expertise with technology to improve efficiency, quality and compliance within the Lab.

Products - L4L Pharma
GMP / GCP and GLP compliant instrument interfacing to LIMS

Services
LIMS Implementation,
Computer System
Validation and Business
Process Optimization

www.csols.com

Let CSols take you *beyond the technology*



CSols, Inc.

131 Continental Dr
Suite 303
Newark DE 19713

Phone: 302-731-5290

Fax: 302-731-4820

Email: sandy.ahmed@csols.com

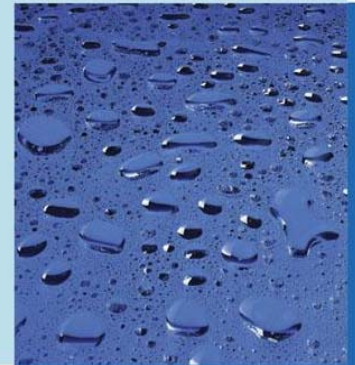
Optimize your Laboratory



laboratory systems integration



Links **L4** LIMS

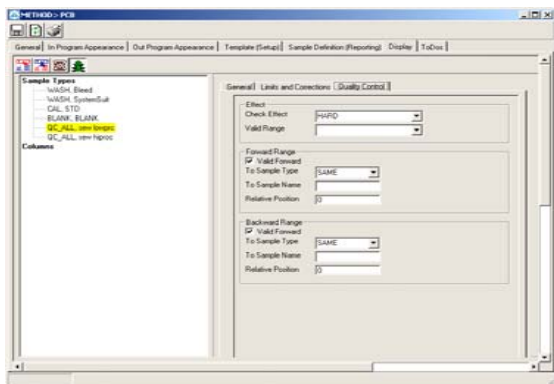


Beyond the technology

Pittcon

2006

Links for LIMS™--- Optimize the analytical testing process for your laboratory



PLUG AND PLAY INTERFACE

CSols offers their customers choice. You can pick the instrument interfacing method that is best for you. CSols Drivers support:

Parsing and Mapping

CSols supports traditional file based parsing and mapping techniques to provide quick and easy integration of any instrument which can produce an ASCII output.

API's and Toolkits

We also support more powerful methods based on plug and play driver technology to seamlessly integrate with intelligent laboratory instruments.

LINKS FOR LIMS™ FEATURES

Flexibility

- ◆ Any instrument can be interfaced to Any LIMS (balances, chromatography systems, robotics, spectrophotometers, LC/MS).
- ◆ Has been successfully deployed in several industry sectors including chemicals, environmental and pharmaceuticals
- ◆ Launch the software from within LIMS, an instrument data system, or from the desktop.

Power

- ◆ Delivers automated calculations, limit checking and bi-directional interfacing
- ◆ Query LIMS by Test, by Sample, or by Worksheet as standard

Robustness

- ◆ Can be deployed in standalone mode or serving hundreds of instruments
- ◆ All transactions, data input, calculations, configurations and data output are audited.

TECHNICAL DETAILS

- ◆ Requires minimal configuration
- ◆ Supports parsing and mapping for file based instruments
- ◆ Supports CSols Plug and Play driver technology for intelligent instruments
- ◆ Deployable on a single workstation, in client server mode or with Citrix
- ◆ Support all major LIMS including Thermo SampleManager, Watson, LabManager, Labware LIMS, LVS Sapphire and ABI SQL*LIMS



Clients who utilize Links for LIMS

- Eli Lilly
- ITS Caleb Brett
- Novartis
- Shell
- AstraZeneca